

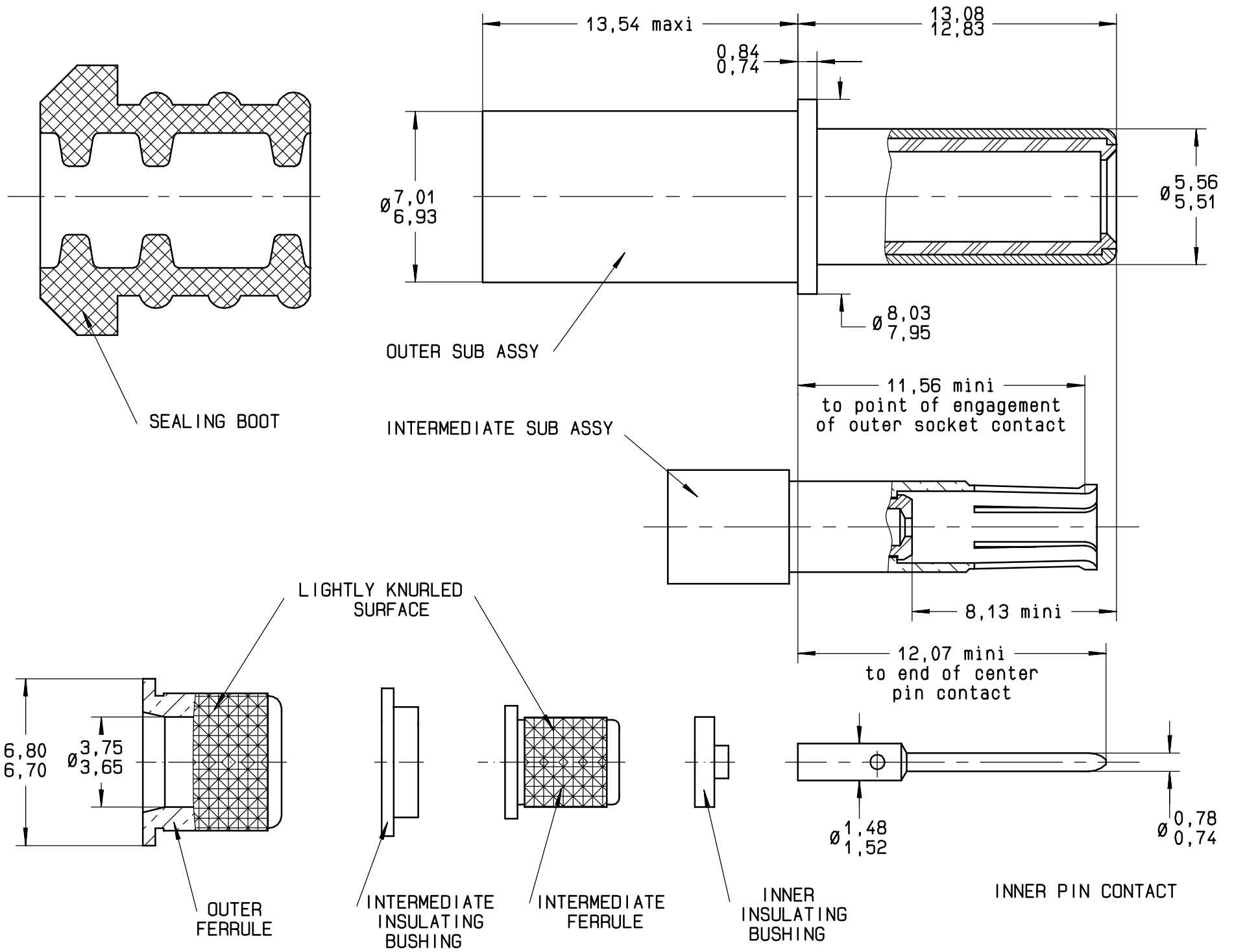


Series
TCX

SIZE 8 CONCENTRIC TRIAX PIN CONTACT REAR RELEASE. REAR REMOVABLE
CABLE PAN 6595

Issue:
25 OCT.99

Page
1 / 1



MATERIALS:

OUTER, CENTER CONTACT, INTERMEDIATE AND OUTER FERRULE: BRASS PER QQ-B-626
 INTERMEDIATE CONTACT: BERYLLIUM COPPER ALLOY PER QQ-C-530 HEAT TREATED FOR SPRINGS TINES, ANNEALED ON CRIMP BARREL
 OUTER, CENTER DIELECTRIC AND INSULATING BUSHING: PTFE
 SEALING BOOT: FLUOROSILICONE

FINISHES: (ALL METAL PARTS)

GOLD PLATE PER MIL-G-45204, TYPE II, GRADE C, CLASS 1 : 50 MICROINCHES OVER NICKEL PLATE PER QQ-N-290, CLASS 2

WIRING INSTRUCTIONS: SEE RP 54522

This information is given as an indication. In the continual goal to improve our products, we reserve the right to make any modifications judged necessary.

4112-9610

CREATION				
PEN: M990105391A				
NOM: BALDYROU				
DATE: 25 OCT.99				
APPR.:				
	Issue	Revisions	Name	Approved